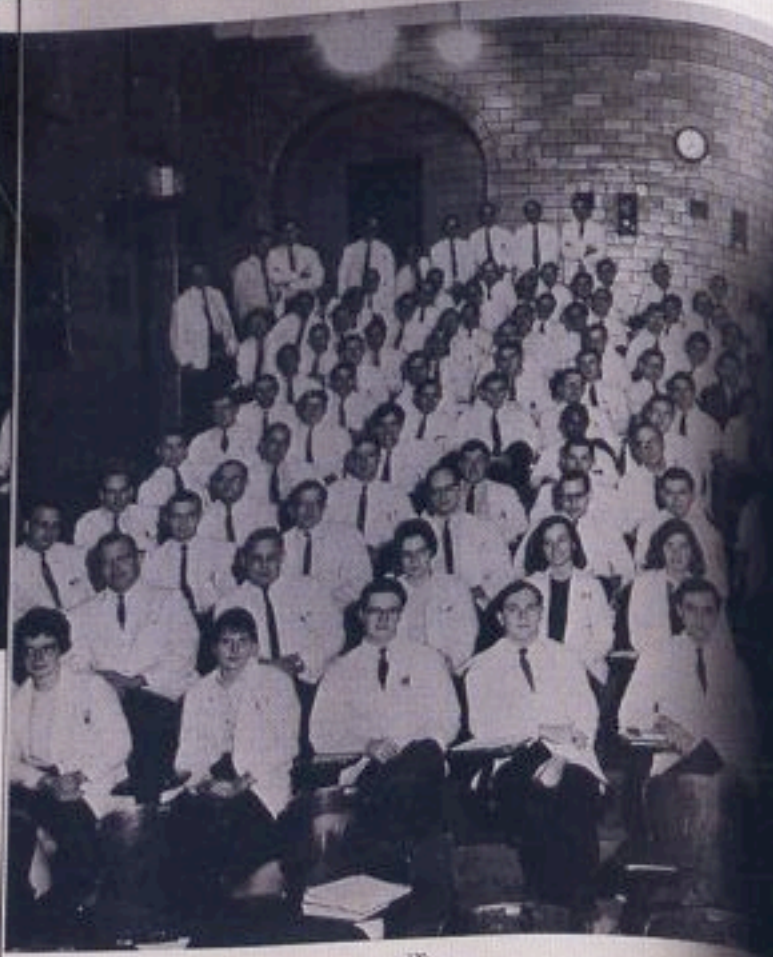




Thomas  
Jefferson  
University  
Hospital

# REFERRING PHYSICIAN'S GUIDE



**Instructions for use of the Oscillometer "Scala alterna".**

The right to publish with the aid of the Oscillometer "Scala alterna" is granted to the author of the present work, in view of the fact that the Oscillometer "Scala alterna" is a new and original invention, and that the author of the present work is the inventor of the Oscillometer "Scala alterna".

The Oscillometer "Scala alterna" is a new and original invention, and that the author of the present work is the inventor of the Oscillometer "Scala alterna".



JEFFERSON MEDICAL COLLEGE

THE JEFFERSON



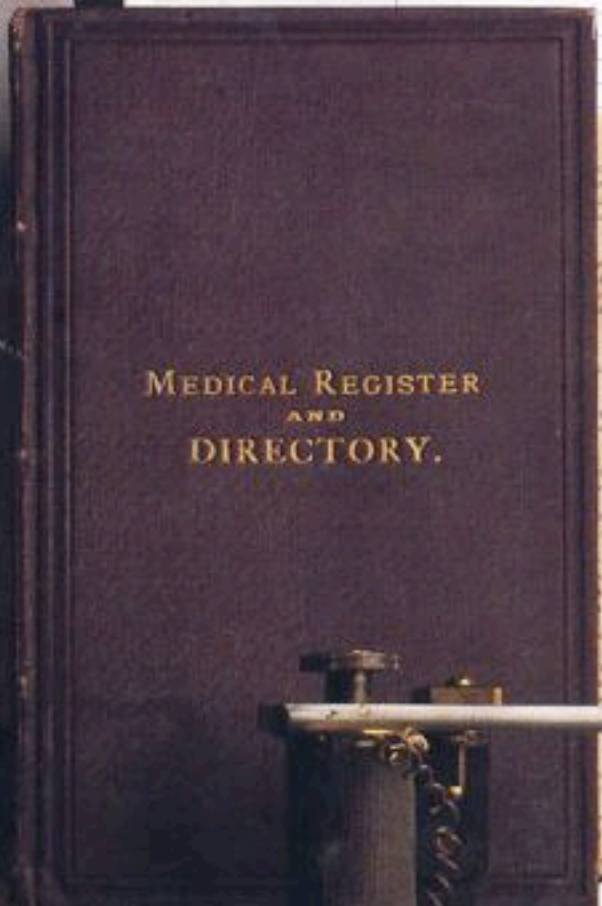
Perfect

THOMAS JEFFERSON UNIVERSITY HOSPITAL  
ADMISSION FORM

NAME: \_\_\_\_\_  
ADDRESS: \_\_\_\_\_  
CITY: \_\_\_\_\_  
STATE: \_\_\_\_\_  
OCCUPATION: \_\_\_\_\_  
EDUCATION: \_\_\_\_\_  
RELIGION: \_\_\_\_\_  
MARRIAGE: \_\_\_\_\_  
CHILDREN: \_\_\_\_\_  
PREVIOUS ILLNESSES: \_\_\_\_\_  
ALLERGIC REACTIONS: \_\_\_\_\_  
OPERATIONS: \_\_\_\_\_  
MEDICATIONS: \_\_\_\_\_  
DIET: \_\_\_\_\_  
SMOKING: \_\_\_\_\_  
ALCOHOL: \_\_\_\_\_  
DRUGS: \_\_\_\_\_  
OTHER: \_\_\_\_\_



UNIT NUMBER  
18



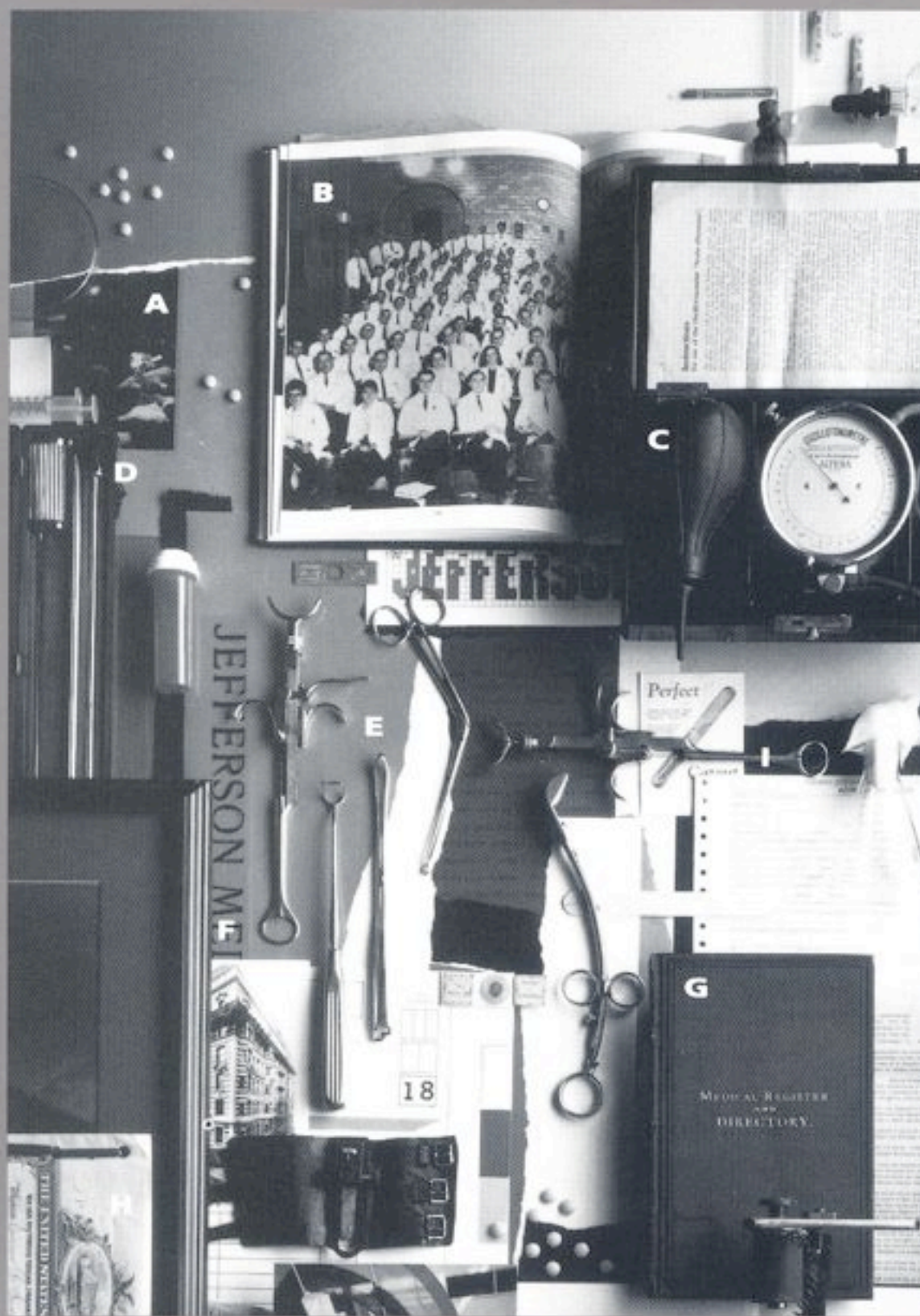


Thomas Jefferson University Hospital and its medical staff offer you a wide range of referral services. The following pages describe these resources and are organized into three sections. • The “Departments” section of the guide describes the various clinical departments and lists the most active members of the Jefferson Medical Staff. Each of these physicians practices exclusively at Jefferson or makes substantial use of its resources. • The second section lists significant multidisciplinary “Programs and Centers.” • The last section is an “Alphabetical Listing” of Jefferson staff listed previously by department. Please call any listed physician directly, or for further information, call 1-800-JEFF NOW.

**FOR GENERAL INFORMATION CALL 215-955-6000**

**FOR PHYSICIAN REFERRALS CALL 1-800-JEFF NOW**





- A** *The Gross Clinic, by Thomas Eakins, located in the Eakins Gallery in Jefferson Alumni Hall.*
- B** *Students of the class of 1968, Jefferson Medical College.*
- C** *Oscillotonometre equipment.*
- D** *Surgical tools.*
- E** *Early 20th-century surgical tools used in general practice.*
- F** *“Old Main” Hospital, 1907.*
- G** *Directory of physicians in the City of Philadelphia, 1882.*
- H** *Certificate awarded for new dental tools.*
- I** *Thomas Jefferson University Hospital admission form.*





Thomas  
Jefferson  
University  
Hospital

Jefferson Medical College  
PHILADELPHIA

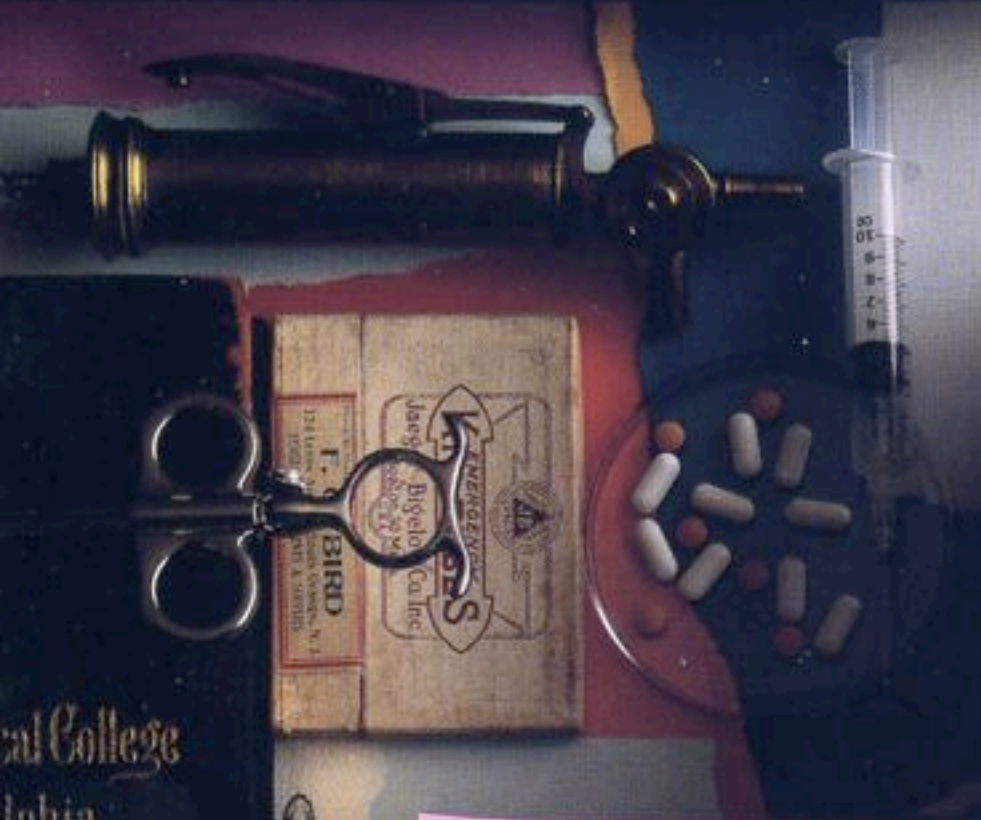


THOMAS JEFFERSON UNIVERSITY  
CENTER-DEPARTMENT OF SURGERY  
PHILADELPHIA, PENNSYLVANIA



DEPARTMENTS

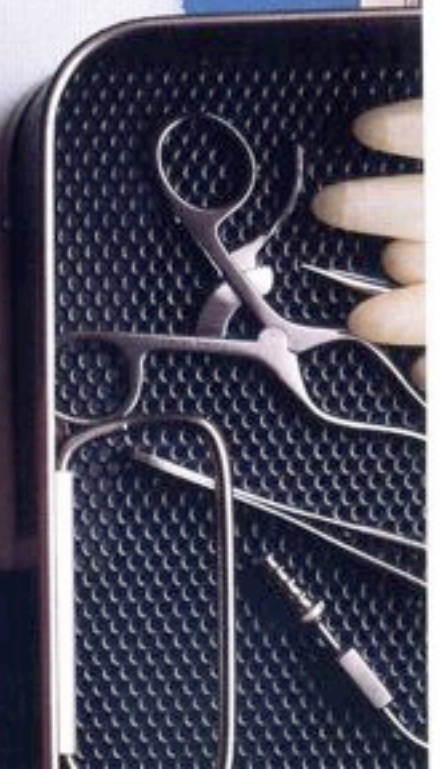
PROGRAMS AND CENTERS



Jefferson Medical College  
Philadelphia



PRACTICAL  
PHARMACEUTICS  
WAKE



ALPHABETICAL LISTING

THE WORLD OF OLD



<b>A</b> NESTHESIOLOGY .....	<b>5</b>
<b>D</b> ENTISTRY .....	<b>7</b>
<b>D</b> ERMATOLOGY .....	<b>8</b>
<b>E</b> MERGENCY MEDICINE .....	<b>9</b>
<b>F</b> AMILY MEDICINE .....	<b>10</b>
<b>M</b> EDICINE .....	<b>11</b>
• <b>C</b> ARDIOLOGY.....	<b>13</b>
• <b>C</b> LINICAL PHARMACOLOGY .....	<b>14</b>
• <b>E</b> NDOCRINOLOGY AND METABOLIC DISEASES.....	<b>14</b>
• <b>E</b> NVIRONMENTAL MEDICINE AND TOXICOLOGY .....	<b>15</b>
• <b>G</b> ASTROENTEROLOGY .....	<b>15</b>
• <b>G</b> ENETICS .....	<b>15</b>
• <b>H</b> EMATOLOGY .....	<b>16</b>
• <b>I</b> NFECTIONOUS DISEASES.....	<b>16</b>
• <b>I</b> NTERNAL MEDICINE .....	<b>16</b>
• <b>M</b> EDICAL ONCOLOGY.....	<b>17</b>
• <b>N</b> EPHROLOGY .....	<b>17</b>
• <b>P</b> ULMONARY MEDICINE AND CRITICAL CARE .....	<b>17</b>
• <b>R</b> HEUMATOLOGY .....	<b>18</b>
<b>N</b> EUROLOGY .....	<b>19</b>
<b>N</b> EUROSURGERY.....	<b>20</b>
<b>O</b> BSTETRICS AND GYNECOLOGY.....	<b>21</b>
<b>O</b> PTHALMOLOGY .....	<b>24</b>
<b>O</b> RTHOPAEDIC SURGERY.....	<b>26</b>
<b>O</b> TOLARYNGOLOGY-HEAD AND NECK SURGERY.....	<b>28</b>
<b>P</b> ATHOLOGY .....	<b>29</b>
<b>P</b> EDIATRICS.....	<b>30</b>
<b>P</b> SYCHIATRY AND HUMAN BEHAVIOR.....	<b>37</b>
<b>R</b> ADIATION ONCOLOGY AND NUCLEAR MEDICINE.....	<b>40</b>
<b>R</b> ADIOLOGY .....	<b>41</b>
<b>R</b> EHABILITATION MEDICINE .....	<b>44</b>



**JOSÉ CARO, M.D.**

Chairman, department of medicine

Jefferson's department of medicine encompasses a spectrum of core, nationally respected medical services. Described below are areas of special focus in the department of medicine.

Taking advantage of one of the most advanced cardiac catheterization laboratories, Jefferson's **DIVISION OF CARDIOLOGY** performs state-of-the-science diagnostic and interventional procedures; in addition, other modalities, such as transesophageal echocardiography, are enhancing diagnosis. Along with their full use of medical and preventive therapies for coronary artery disease, Jeff cardiologists have pioneered trans-catheter myocardial revascularization techniques. A new approach using stents after suboptimal balloon-angioplasty outcome has reduced Jeff's emergency coronary-surgery rate to approximately 1 percent. A national, randomized trial of stenting versus PTCA is now under way to assess efficacy by measuring restenosis. Jeff is the core angiographic facility for this study. The use of catheter techniques for ablation of arrhythmias is an active part of Jeff's comprehensive electrophysiology program. The division emphasizes accessibility to its services through such features as the JeffSTAT transfer program for critically ill patients. The division's electrophysiology group uses computer-aided evaluation and collaborates with Jeff cardiothoracic surgeons for patients who need pacemakers, implantable defibrillators, and other procedures.

Clinical pharmacologists in Jefferson's **DIVISION OF CLINICAL PHARMACOLOGY** conduct Phase I and Phase II studies on innovative, investigational drugs. They also conduct basic research on cardiovascular pharmacology as well as thrombosis and atherogenesis and provide expert advice to practicing physicians on therapeutic agents.

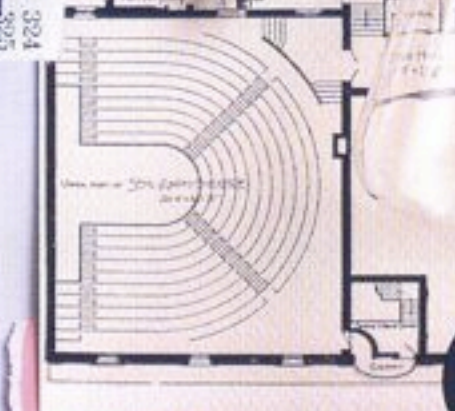
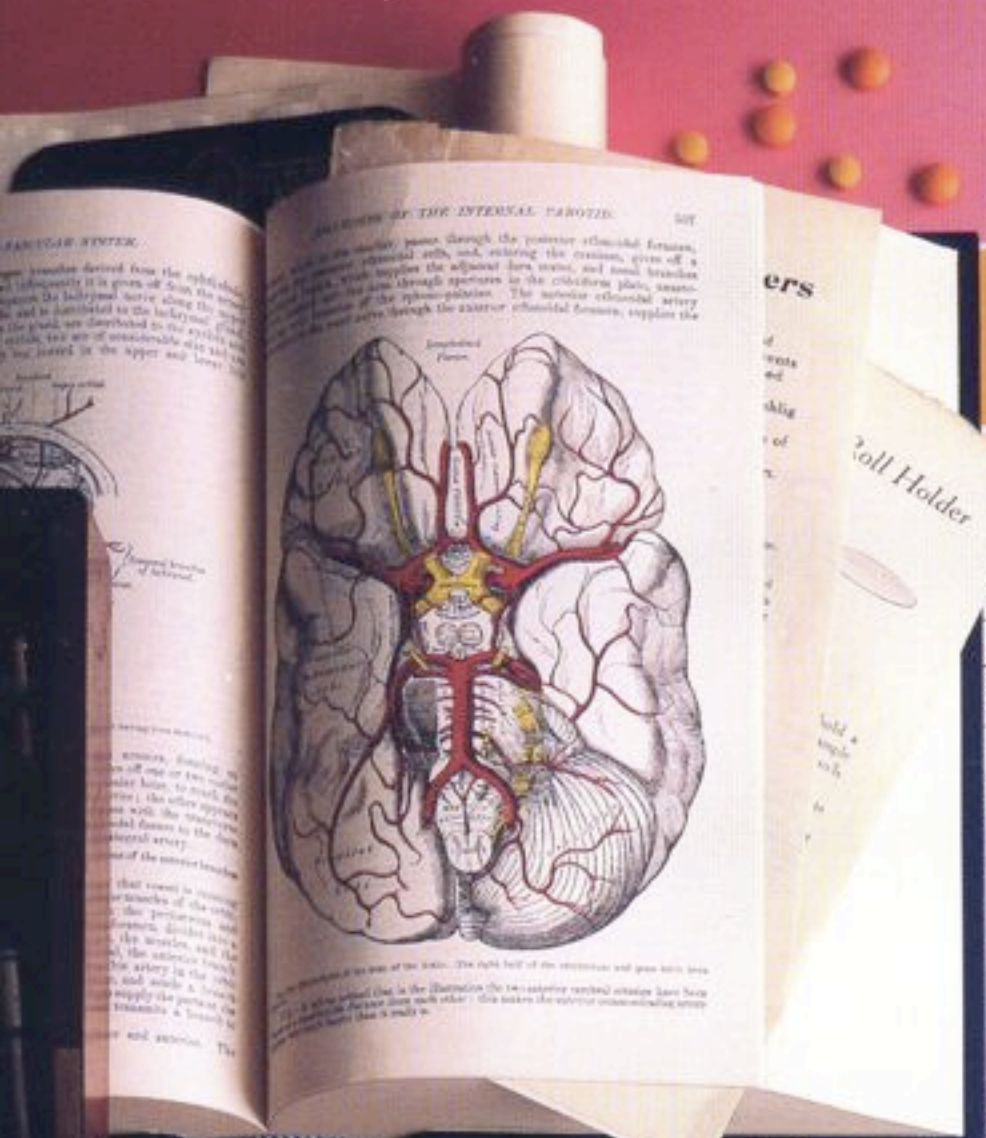
Complex diabetic conditions receive thorough evaluation at Jefferson's **DIVISION OF ENDOCRINOLOGY AND METABOLIC DISEASES**, where patients receive integrated, multimodality care. Jefferson endocrinologists also focus on detailed analysis and modifications of lipid profile in patients with abnormal blood lipid levels.

The staff of Jefferson's **DIVISION OF ENVIRONMENTAL MEDICINE AND TOXICOLOGY** focuses on medical problems caused by exposure to chemical, physical, and biological hazards. Activities include patient care, consultations, on-site analyses, and testing. Physicians and other health-care specialists with expertise in occupational medicine, environmental medicine, and toxicology provide the services.





Thomas  
Jefferson  
University  
Hospital



Jefferson Medical College  
PHILADELPHIA  
Lectures on  
THE PRACTICE OF MEDICINE

BY  
J. M. Da Costa, M.D.  
Admit Mr. J. S. DeYoung  
Session 18

PROGRAMS AND CENTERS

ALPHABETICAL LISTING



## JEFFERSON PROGRAMS AND CENTERS

"THOMPSON 13" PROGRAM FOR <b>A</b> DULT PSYCHIATRY.....	56
"THOMPSON 14" PROGRAM FOR <b>A</b> DULT PSYCHIATRY.....	56
<b>A</b> IDS CLINICAL TRIAL GROUP .....	56
<b>A</b> MBULATORY CARE CENTER.....	56
<b>A</b> MPUTEE PROGRAM .....	57
<b>A</b> NTENATAL EVALUATION CENTER.....	57
<b>A</b> RTHRITIS CENTER.....	58
<b>A</b> RTS MEDICINE CENTER.....	58
<b>A</b> STHMA PROGRAM.....	58
<b>B</b> LOOD DONOR CENTER .....	59
<b>B</b> ONE DISEASE CENTER.....	59
BIOFEEDBACK FOR <b>B</b> OWEL CONTROL PROGRAM.....	59
<b>B</b> RAIN INJURY REHABILITATION PROGRAMS .....	59
<b>B</b> REAST IMAGING CENTER .....	60
BODINE CENTER FOR <b>C</b> ANCER TREATMENT .....	60
<b>C</b> ARDIAC REHABILITATION PROGRAM .....	60
<b>C</b> ARDIAC TREATMENT PROGRAM .....	61
CHILDREN'S CENTER FOR <b>C</b> EREBRAL PALSY AND NEUROMUSCULAR DISORDERS.....	61
<b>C</b> EREBROVASCULAR DISEASE CENTER .....	62
<b>C</b> HILDBIRTH PROGRAM/PARENT EDUCATION .....	62
<b>C</b> ICATRICAL PEMPHIGOID CLINIC .....	62
<b>C</b> OLORECTAL CANCER GENETICS CENTER.....	63
"THOMPSON 12" PROGRAM FOR <b>C</b> OMBINED DISORDERS .....	63
<b>C</b> ORPORATE HEALTH PROGRAM .....	63
<b>C</b> RISIS CENTER .....	63
<b>D</b> EMENTIA EVALUATION CENTER .....	64
CENTER FOR INTERNATIONAL <b>D</b> ERMATOLOGY .....	64
<b>D</b> ERMATOPATHOLOGY LABORATORY .....	64
INTERMEDIATE <b>D</b> IALYSIS PROGRAM .....	64
<b>D</b> RUG AND ALCOHOL PROGRAMS .....	65
<b>E</b> CMO PROGRAM .....	65
<b>E</b> NDOCRINOLOGY/DIABETES CENTER.....	65
<b>E</b> NURESIS PROGRAM .....	66
CENTER FOR <b>F</b> ACIAL PLASTIC SURGERY .....	66
<b>F</b> AMILY CENTER.....	66



---

**• NEUROIMPLANT CENTER**  
**215-955-2364**

**GIANCARLO BAROLAT, M.D.**

Director

Patients who suffer from otherwise intractable chronic pain, or from neuromotor dysfunction in the form of spasticity, dystonia, or other motor disorders – due to spinal-cord or head injury, multiple sclerosis, or cerebral palsy – are increasingly finding relief from the growing field of neuroimplanted devices. Jefferson's Neuroimplant Center is one of the world's leading services for surgically placing electrical neuro-stimulators (often in the spinal cord) and drug infusion pumps. The group also offers investigational implant procedures for refractory epileptic seizures and neurogenic incontinence.

**• NEUROMUSCULAR DISEASE CLINIC**

**MICHAEL SHY, M.D., Co-Director** .....215-955-6692

**TERRY HEIMAN-PATTERSON, M.D., Co-Director** .....215-955-6694

This clinic provides diagnosis and treatment for pediatric and adult patients who suffer from one or more diseases affecting the peripheral nerves, muscles, or the neuromuscular junction. Typical patients treated include those with amyotrophic lateral sclerosis, myasthenia gravis, Guillian-Barre syndrome, and hereditary and metabolic diseases of the muscles and nerves. Patients can be seen by several specialists and allied professionals on the same day at one location. The clinic's staff is composed of physicians who specialize in neurology, physiatry, orthopaedic surgery, pediatric neurology, pulmonary medicine, and psychiatry. Supporting these physicians are allied-health professionals in speech and swallowing, rehabilitation medicine, occupational therapy, and social work. The program accepts direct referrals from associations devoted to specific neuromuscular diseases. The staff works closely with neurologists who may need a second opinion and with psychiatrists requiring the expertise of specialists in neuromuscular diseases.

**• COMPREHENSIVE NEUROPSYCHIATRY PROGRAM**  
**215-955-4082**

**ALEXANDER ZWIL, M.D.**

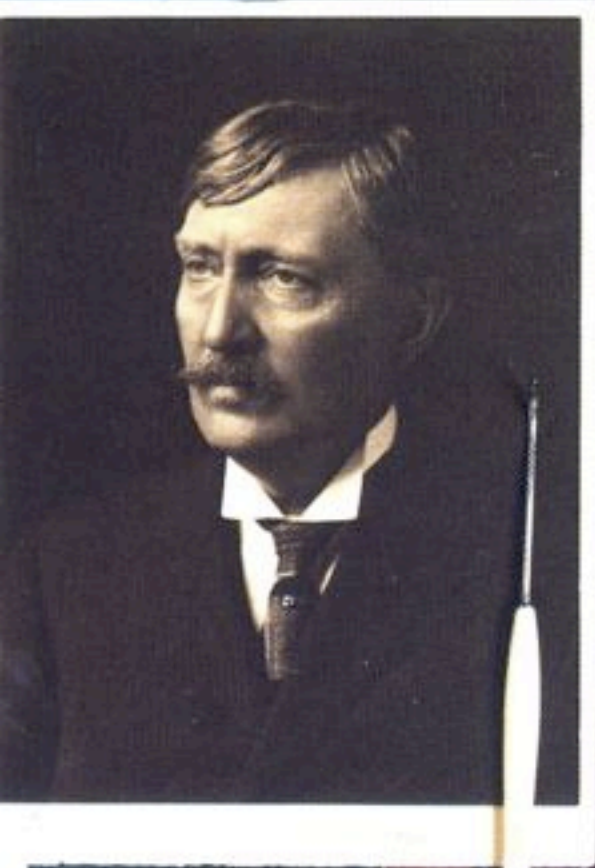
Director

This program provides psychiatric evaluation and treatment, on an inpatient or outpatient basis, for individuals with organic brain disorders and offers consultation services to other physicians and professionals caring for such patients. This specialized psychiatric service addresses the needs of patients with suspected brain disease who have affective or other types of mental or behavioral disturbances, including patients who have experienced traumatic brain injuries, structural brain disease, seizure disorders, encephalopathies, degenerative CNS disease, and stroke.





Thomas Jefferson University Hospital



JEFFERSON MEDICAL COLLEGE LIBRARY

BD YAL...  
HYPODERMIC...  
No. 576



Medical College

ASSOCIATION.

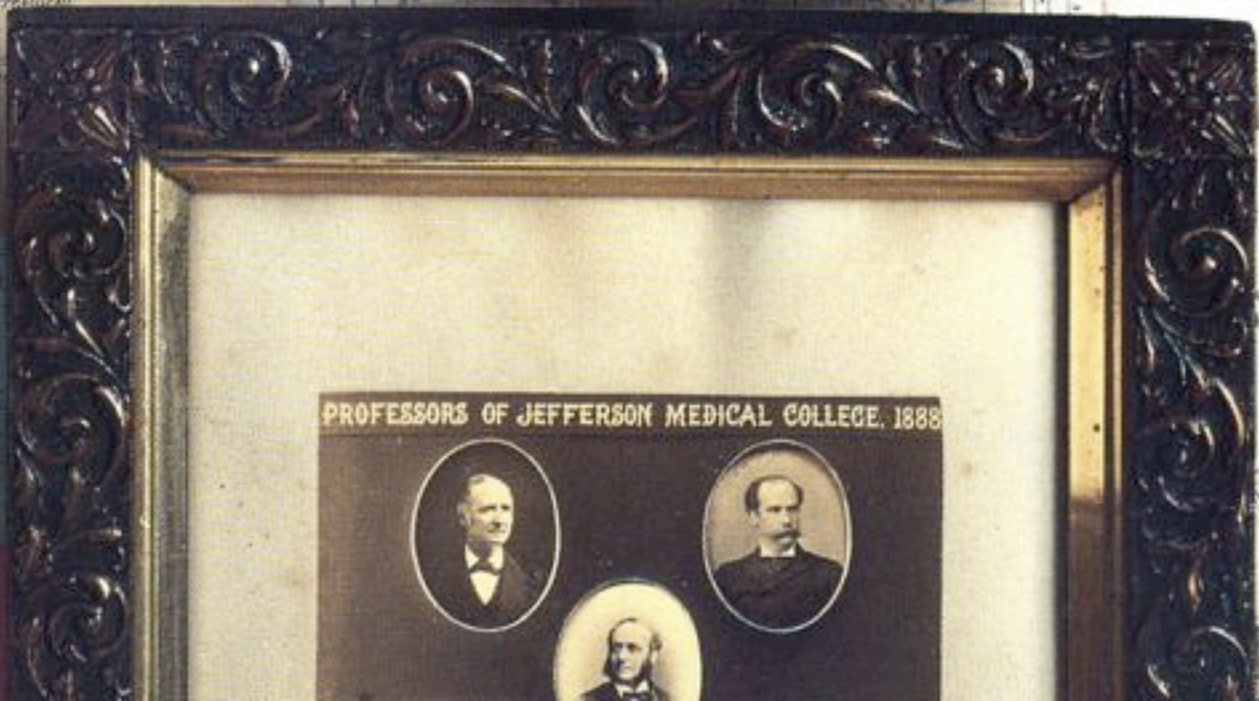
er Quintin Cavell, M.D. having...  
ical College in Class 1928...  
ber of the Association.



Willard H. Harvey, President  
R. M. ...



JEFFERSON MEDICAL COLLEGE  
Anatomy  
By Joseph Hammond



PROFESSORS OF JEFFERSON MEDICAL COLLEGE, 1888



## ALPHABETICAL LISTING

Listing on the following pages in alphabetical order are those members of the Jefferson Medical Staff who treat patients in need of hospital services exclusively or significantly at Jefferson.

### A

JODI ABBOTT, M.D. ....	215-955-2122
<i>Obstetrics and gynecology</i>	
JOHN ABRUZZO, M.D. ....	215-955-8430
<i>Medicine</i>	
RAYMOND ADAMS, M.D. ....	215-928-3138
<i>Ophthalmology</i>	
WAYNE ADAMS, PH.D. ....	302-651-4502
<i>Pediatrics</i>	
SUSAN ADENIYI-JONES, M.D. ....	215-955-6523
<i>Pediatrics</i>	
HERBERT ADLER, M.D. ....	215-955-6653
<i>Psychiatry</i>	
ROBERT AIKEN, M.D. ....	215-574-8625
<i>Neurology</i>	
SALMAN AKHTAR, M.D. ....	215-955-8420
<i>Psychiatry</i>	
ARCHIBALD ALEXANDER, M.D. ....	215-955-8749
<i>Radiology</i>	
MICHAEL ALEXANDER, M.D. ....	302-651-5601
<i>Pediatrics</i>	
ROBERT ALEXANDER, M.D. ....	215-955-8018
<i>Psychiatry</i>	
WILLIAM ALLISON, M.D. ....	215-546-2458
<i>Medicine</i>	
RICHARD ALLMAN, M.D. ....	215-923-0192
<i>Medicine</i>	
PETER AMADIO, M.D. ....	215-955-7190
<i>Family medicine</i>	
CAROL ANDERSON, M.D. ....	215-955-6955
<i>Medicine</i>	
PAUL ANISMAN, M.D. ....	215-955-2465
<i>Pediatrics</i>	
MIRIAM ANOLIK, M.D. ....	215-755-2652
<i>Pediatrics</i>	